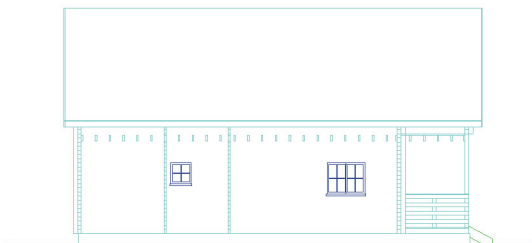
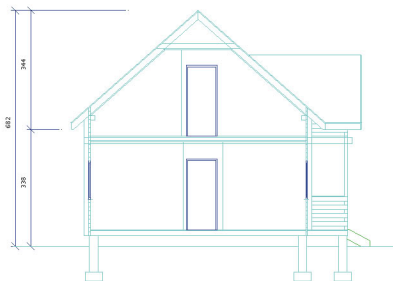


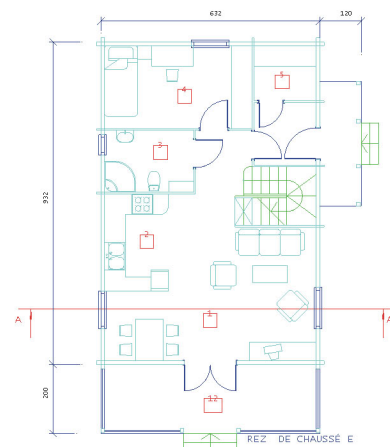
MAISON ORLEAN - 143,0 m²



MAISON ORLEAN - 143,0 m²



MAISON ORLEAN - 143,0 m²



SURFACE

	= 25,2 m ²
	= 5,2 m ²
	= 4,4 m ²
	= 10,3 m ²
	= 2,9 m ²
	= 4,1 m ²
	= 0,2 m ²
	= 7,1 m ²
	= 3,6 m ²
	= 12,4 m ²
	= 5,9 m ²
	= 12,6 m ²

SURFACE DE SOL - REZ DE CHAUSSE E 58,9 m²

SURFACE DE SOL - ETAGE 58,9 m²

SURFACE DE SOL - TERRASSE R.D.CH. 12,6 m²

SURFACE DE SOL - TERRASSE ETAGE 12,6 m²

TOTAL 143,0 m²

